

NAV ENTO

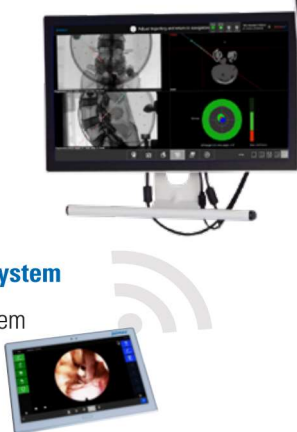
Navigation Endoscopic Tower

4TH GENERATION TROLLEY

The 4th generation units have a standardized design and are equipped with a touch panel (the Versicon[®] irrigation pump follows). The front has been designed using ceranglass, which ensures easy cleaning.

1 Vitegra[®] Visual Integration System

- Documentation system
- Command system
- DICOM-Module



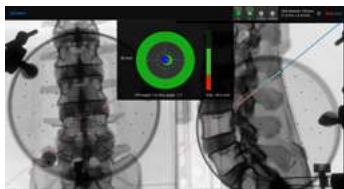
2 Camsource[®] LED Camera & Light Source System



- 4K resolution
- Single cable technology
- White balance+
- Combined camera light technology

3 Intracs[®] em Integrated Navigation Tracking & Control System

- Electromagnetic navigation
- Suitable for any experience level
- Minimized radiation exposure
- Precise navigation at the instrument tip
- Guidance View for intuitive and accurate guidance



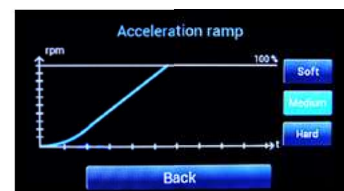
- Easy to handle and easy access to the equipment
- Improved side panels to protect the devices
- Secured camera head mount
- Direct connection to devices (e.g. USB, network or video) via breakout box on the rear panel



Rear side

4 Shrill[®] Shaver Drill System

- Increased speed up to 10,000 rpm and high torque
- Automatic blade detection
- Adjustable acceleration ramp



5 Endovapor[®] 2 Multi Radio Frequency System

- Specifically developed spine-modes
- Arc control
- Neutral electrode monitoring

6 Versicon[®] Versatile Irrigation Control

- Specifically developed spine-mode for gentle treatment
- Permanent control of flow and pressure
- Special arthroscopy-mode